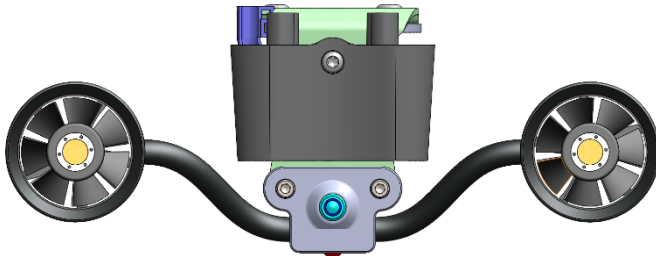


DUAL COOL

Installing TORNADO on Milwaukee 8 Softails (Ignition coil on the left side instead of a horn.)



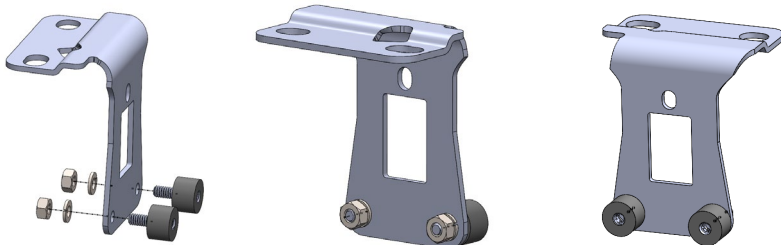
Kit Includes:

- Dual Cool Assembly
- Mounting Bracket
- 2 Rubber Isolators
- 2 Large Lock Washers
- 2 Small Lock Washers
- 2 Nuts
- 2 Bolts

Tools Required:

- 9/16 Wrench
- 9/16 Socket on a Ratchet
- 5/32 Allen Wrench
- 3/16 Allen Wrench
- 7/16 Box End Wrench
- T27 TORX
- T45 TORX

Pre-Assembly



Put the 2 vibration dampeners through the front of the bracket.
Put the 2 large lock washers on flip side of those holes, followed by the 7/16 nuts.
Tighten down with a ratchet.

Preparing The Motorcycle

Remove the seat.

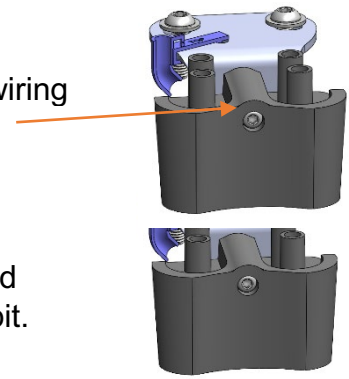
Prop tank up by loosening bolt in front to provide a good pivot point while removing the 9/16 nut and bolt on the back side. You might not need to prop up your tank but it does provide more clearance to make reaching the bolts easier.

Remove the chrome side cover to access the plug that will be used to power the Dual Cool. Use a 5/32 Allen wrench to remove the bolt and then pull cover straight out to uncover the 6 pin plug.

Installation

Pop the coil wires off the coil.

Remove the single T27 mounting bolt that secures the coil. Unplug the wiring harness and set the coil aside.

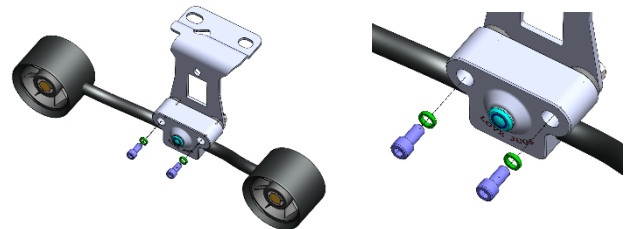


Remove the 2 bolts that hold bracket on with a T45 torque spit. If you find reaching them a challenge, try using a 5/16 ratchet on the shank of the spit.

Remove both bolts that secure the bracket, but it is not necessary to remove the bracket itself. The Dual Cool bracket will conveniently lay on top of that bracket.

Be sure to leave the wire clip in place when putting both bolts back in to secure the brackets.

Place the recessed mounting holes in the Dual Cool assembly on to the previously installed vibration dampeners on the bracket.

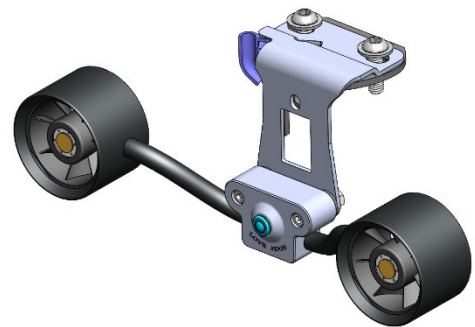


The 2 small bolts and washers supplied in the kit are installed to hold the Dual Cool in place. Use a 3/16 Allen wrench to install them.

Route the Dual Cool wire before reinstalling the ignition coil. Wind this wiring harness up to the Dual Cool bracket and secure it with a tie wrap. Snake the other end under the tank and over the top of the fuel line. Next push the connector through the hole in the frame just below where the bolt for the tank was removed earlier. Move the main wiring harness over and move the vacuum line back once the wire is through.

Remove the rubber caps from the 6-pin accessory port and plug in the Dual Cool.

Care should be taken when routing the wire to avoid places where it can interfere with any moving parts, which can cause future breaks in the wire. Make sure to properly secure the wiring and avoid contact with electrical or hot parts in the engine.



Once power is engaged, test the operation of the Dual Cool by pushing the power button in the middle of the assembly to turn them on. Be sure the coil's wiring harness comes through the square hole in the new bracket you just installed and plug the coil back in.

Use the T27 ratchet to tightly secure the coil with the previously removed bolt. Plug the coil wires back in place.

Reinstall the side cover, bolt the tank back on, and put your seat securely back in place. and put your seat back in place.

P.S. I would love it if you would e-mail me a picture of your "Dual Cool" equipped bike. We will rotate it into our "Show Your Cools" section on the DUAL COOL web site. e-mail: info@dual-cool.com